



HOMES, LLC.
CUSTOM HOMES

CGC034704

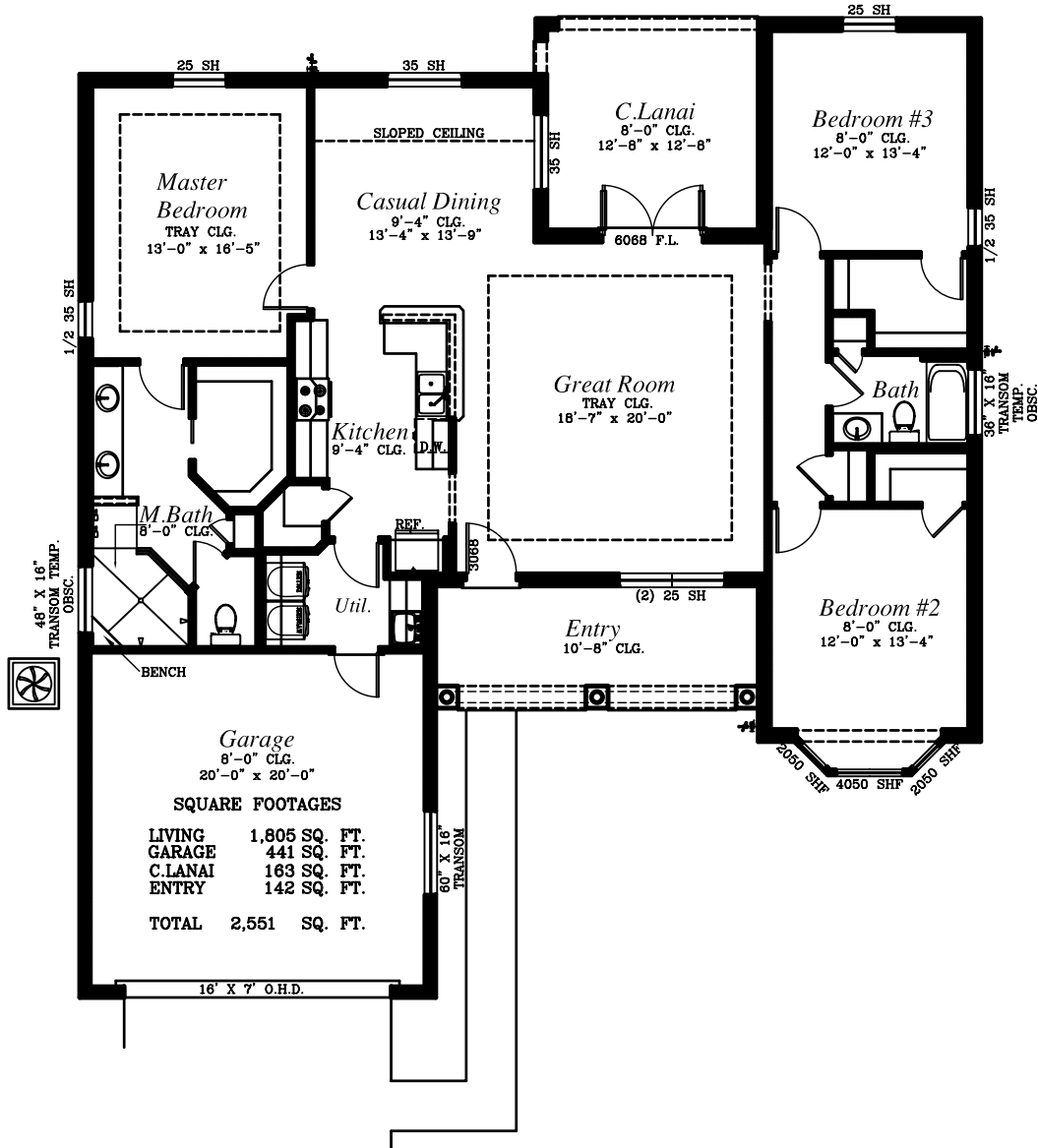
"Compare the Quality"

The Hawthorne II

PHONE: 352-427-3423
4215 SW 4TH AVENUE, OCALA, FLORIDA 34471
email: fequi@cox.net



58'-8" OVERALL DEPTH



54'-0" OVERALL WIDTH

THESE DRAWINGS, AND CONTENT OF THESE PLANS ARE THE PROPERTY OF FRE HOMES, LLC., AND ARE PROTECTED UNDER COPYRIGHT LAW. REPRODUCTION IN ANY FORM WITHOUT EXPRESS WRITTEN CONSENT IS STRICTLY PROHIBITED. ALL COPYRIGHTED WORKS ARE PROTECTED BY UNITED STATES COPYRIGHT LAW (TITLE 17, UNITED STATES CODE) AND THE BERNE CONVENTION FOR THE INTERNATIONAL PROTECTION OF LITERARY AND ARTISTIC WORKS. FEDERAL AND INTERNATIONAL COPYRIGHT PROTECTION LAWS EXTEND TO ORIGINAL AND MODIFIED DERIVATIVE PLANS, ARCHITECTURAL WORKS, CONCEPTS AND DESIGNS, AND IS APPLICABLE TO INTENTIONAL AND UNINTENTIONAL INFRINGEMENTS, AND PROVIDES FOR SPECIFIC STATUTORY DAMAGES BOTH CIVIL AND CRIMINAL.